

355 CHURCH ST

PARRAMATTA

PLANNING PROPOSAL - LANDSCAPE

JULY 2018
ISSUE A

Prepared for:



STOCKLAND

Level 25, 133 Castlereagh Street,
Sydney

NSW 2000

P: (02) 9035 2000

W: <https://www.Stockland.com.au>

Prepared by:



TURF DESIGN STUDIO

95 The Kingsway,
Cronulla

NSW 2230

P: (02) 9527 3380

W: www.turfdesign.com

Site Context

LANDSCAPE CONTEXT



The project site is located directly opposite Prince Alfred Square, a large park declared state heritage significant in 2017.

Prince Alfred Square was the site of Parramatta's second gaol from 1804 until 1841 and first female factory from 1804 until 1821. It became a village green in 1837. As an intact public square from the Victorian era it is a rare example of the early Public Parks Movement in NSW, which also contains elements added in the Edwardian, inter-war and post-war eras (Source: City of Parramatta).

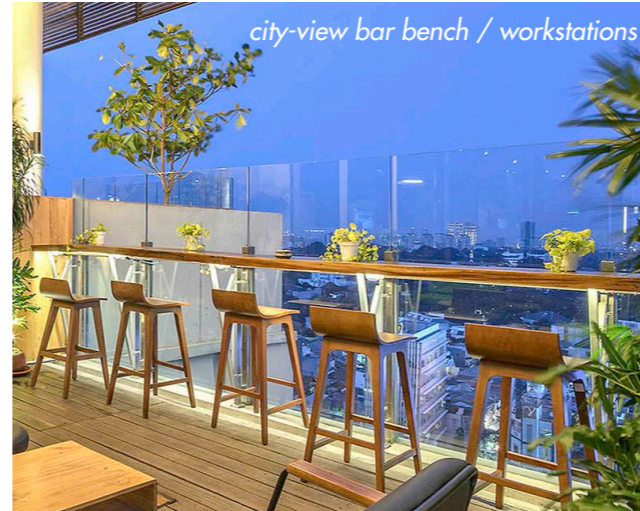
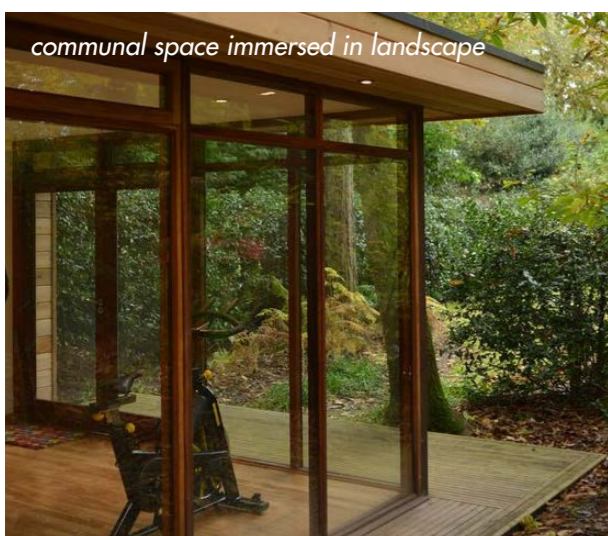
Today, Prince Alfred Square is a key open space connection from Victoria Rd to the Parramatta River Foreshore. The landscape proposal for 355 Church St celebrates this open space asset by maximising elevated views across the park throughout, and creating a green transition to the built form with new street trees and cascading planting on lower-level balconies and upper level communal terraces.

PROJECT, ADDRESS		LANDSCAPE DA REPORT	
Iss.	Amendment	Date	Checked
A	Planning Proposal	06.07.18	MC



Design Response

DESIGN STATEMENT



Podium landscapes in today's cities need to perform a number of roles beyond their basic function of offering amenity for residents. Taking a whole-of-city perspective, each podium landscape is an opportunity to contribute to urban tree canopy & greening, biodiversity & habitat, cleaning the air, urban cooling, and enhancing borrowed landscape views from adjacent properties. Current state government strategic documents support these outcomes; namely the Sydney Green Grid, Greener Places, Better Placed, 5 Million Trees, and the Apartment Design Guide.

355 Church St is blessed with uninterrupted views south across the greenery of Prince Alfred Square. The communal podium and tower terraces orientate themselves towards this important 'borrowed landscape' asset, and offer residents a diversity of amenities that can be enjoyed all times of the year. There is a focus on creating spaces that are adaptable to a range of programs and inclusive of all ages and abilities; all framed by lush planting that provides shade, privacy, and assists with wind mitigation.

The Level 3 podium offers opportunities for everything from an intimate garden to a large open lawn. A sound-proofed communal room with kitchen facilities offers elevated views south to Prince Alfred Square and combines with a large north-facing, partially weather-protected deck to create a highly flexible space. Potential uses include hiring of the space for social gatherings, health & well-being activities, and music practice. A waterfall element to the deck edge brings energy, informal play, and cooling to the main podium space.

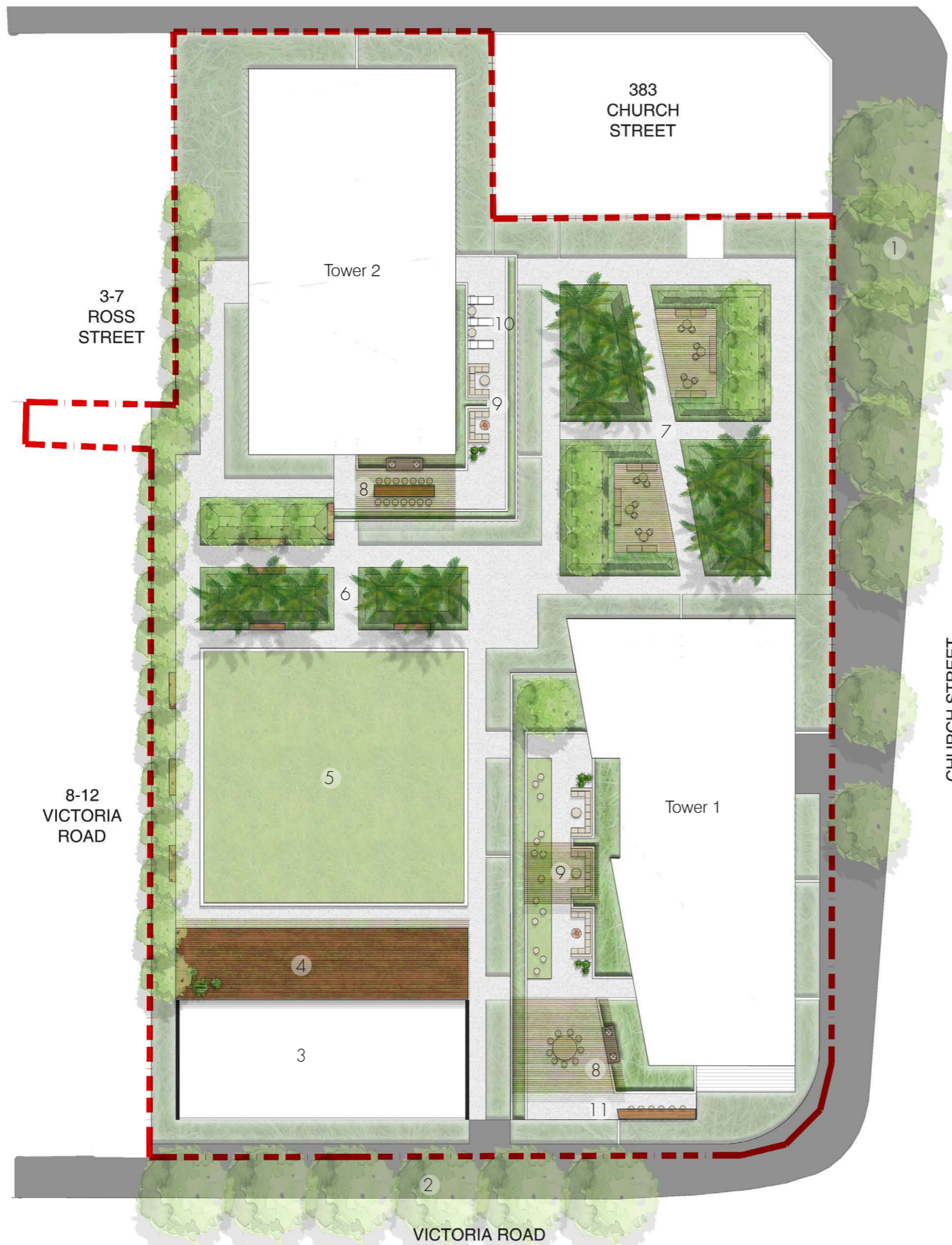
The proposed 'cooling gardens' recognise the need for shaded retreat in the hot urban summer, and provide the surrounding apartments with a lush green outlook. Open pergola structures nestled within the greenery offer dappled screening of moveable seating areas below.

The communal tower terraces complement the podium landscape offering with a series of seating and lounging spaces for social gathering in small groups, day beds, and also a bar bench with power & usb connections to facilitate working from home with views across the city.

At street level, the public domain will be designed consistent with City of Parramatta Council's public domain guidelines, with all existing street trees on Church St retained and additional street trees proposed on Victoria Rd in accordance with the CBD - Street Tree Strategy.

PROJECT, ADDRESS		LANDSCAPE DA REPORT	
Iss.	Amendment	Date	Checked
A	Planning Proposal	06.07.18	MC

Design Response LANDSCAPE CONCEPT PLAN



LEGEND

STREET LEVEL

1. Existing Street Trees Retained
2. Proposed New Street Trees

PODIUM LEVEL 3

3. Communal Room - with bar / kitchen facilities, sound-proofed
4. Timber Deck - with partially weather-protected pergola & waterfall feature
5. Open Lawn - with seating to edge and buffer planting to apartments
6. Palm Forest - green threshold between lawn and building
7. Cooling Gardens - pergolas and moveable furniture within rainforest planting

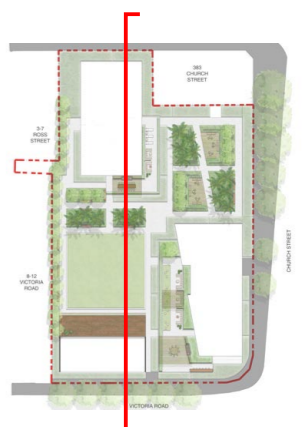
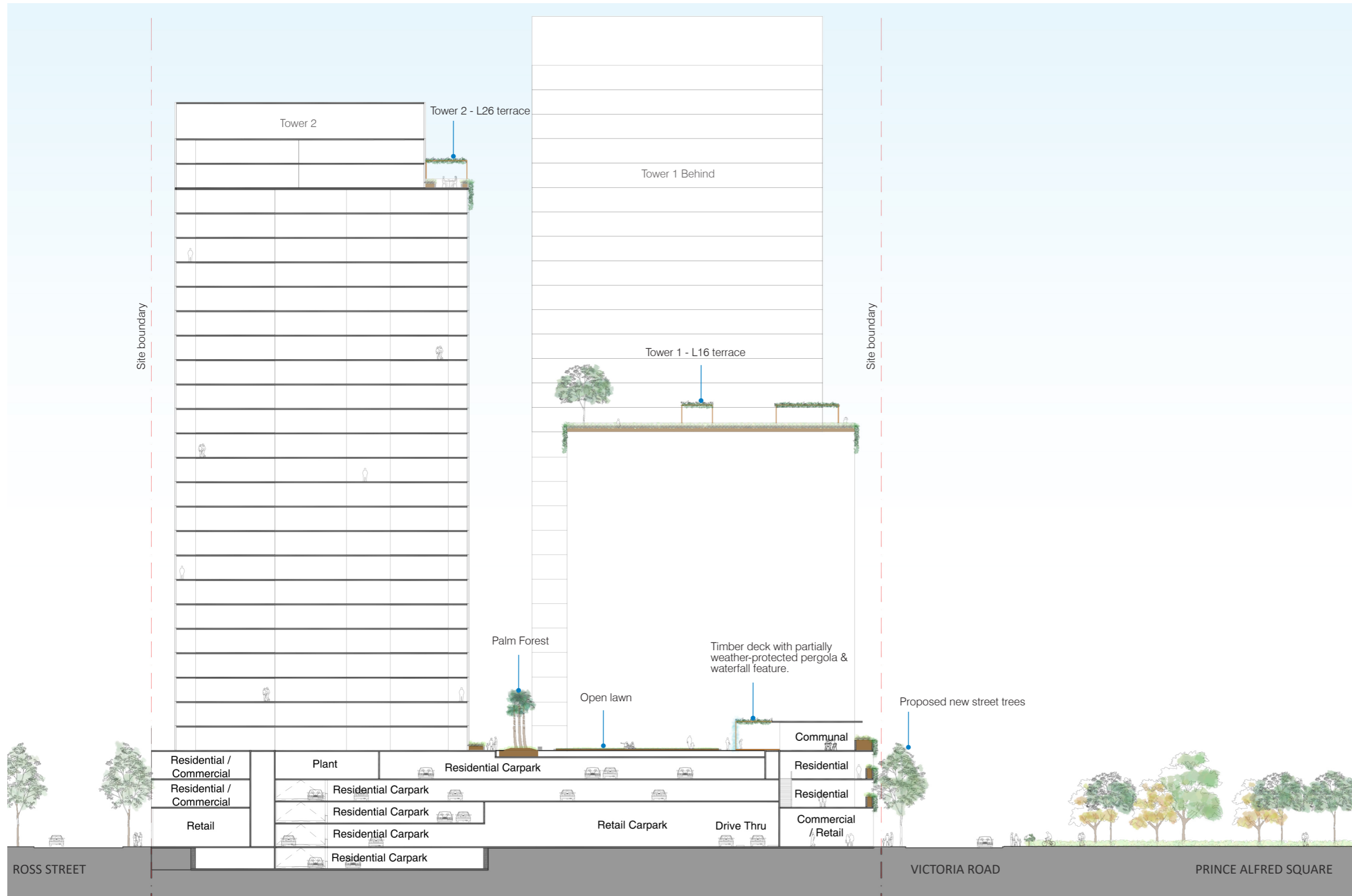
TOWER TERRACES

8. BBQ Bench and dining table under weather-protected pergola
9. Lounge areas with fire pit / coffee table
10. Day beds - prime solar access
11. Bar Bench - elevated views of the park and city beyond

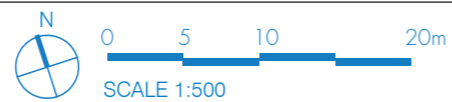
PROJECT, ADDRESS		LANDSCAPE DA REPORT	
Iss.	Amendment	Date	Checked
A	Planning Proposal	06.07.18	MC



Design Response NORTH-SOUTH SECTION



PROJECT, ADDRESS		LANDSCAPE DA REPORT	
Iss.	Amendment	Date	Checked
A	Planning Proposal	06.07.18	MC

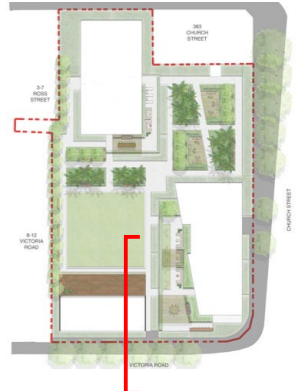
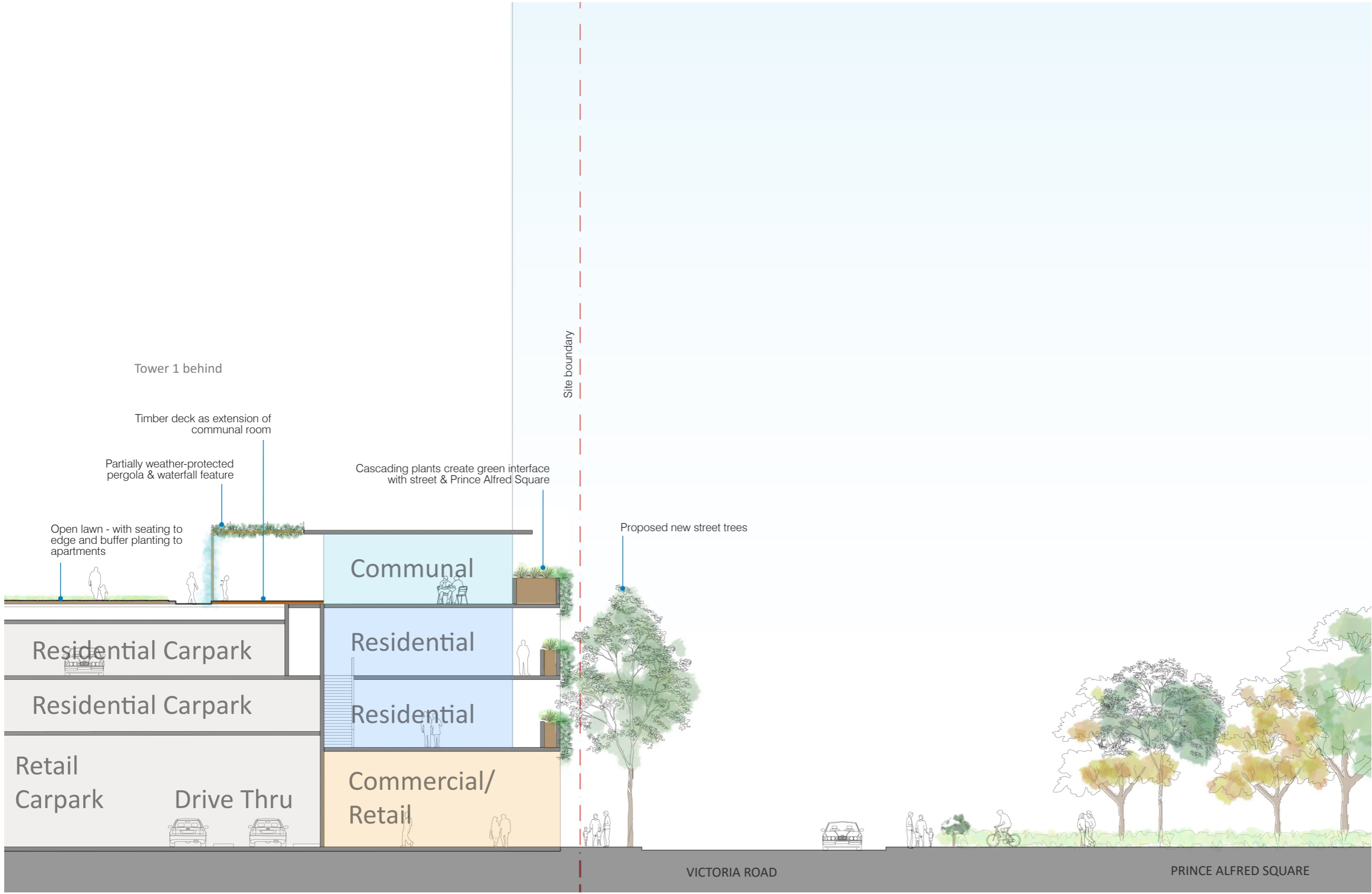


Prepared for: Stockland

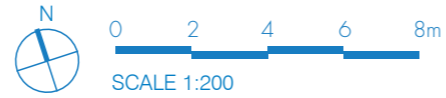
L-PP-5
Prepared by: Turf Design Studio



Design Response STREETSCAPE SECTION



PROJECT, ADDRESS		LANDSCAPE DA REPORT	
Iss.	Amendment	Date	Checked
A	Planning Proposal	06.07.18	MC



Design Response MATERIAL PALETTE

HARDWARE

The external areas material selection will complement the Architectural materials. Natural, earthy materials and tones will give warmth to the communal spaces. All materials and products will be high quality and hard-wearing, appropriate for use in communal areas.

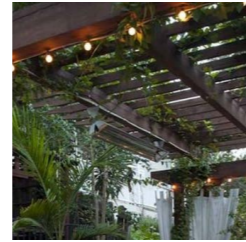
PODIUM LEVEL 3



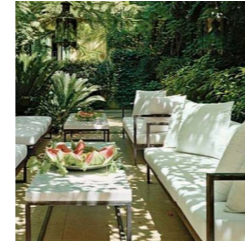
Concrete unit paving



Concrete bench with timber battens



Timber pergola with greening



Outdoor lounges

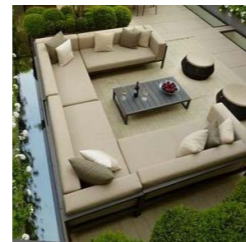
ROOFTOP TERRACES



Concrete BBQ bench



Corten steel fire pit



Lounge settings



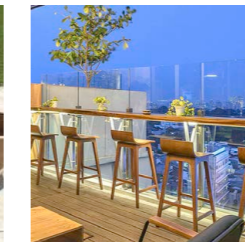
Feature pots



Day beds



Dining table settings



Timber bar bench with stools

PLANTING

Planting throughout the development will be designed for environmental comfort and long-term resilience. All species will be hardy, drought tolerant, and proven to be successful for podium landscapes in the Parramatta area. Species selection across all planters will be determined by environmental exposure (solar/wind) and soil volumes (ADG compliant).



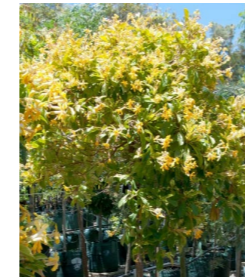
Cupaniopsis anacardioides



Citrus limon



Howea forsteriana



Hymenosporum flavum



Plumeria acutifolia



Philodendron selloum



Tristanopsis laurina



Alcantarea imperialis 'Rubra'



Alpinia zerumbet 'Variegata'



Cordyline rubra



Fatsia japonica



Hibbertia scandens



Strelitzia reginae



Trachelospermum jasminoides

TREES		
Botanical Name	Common Name	Pot Size / Installation size
<i>Cupaniopsis anacardioides</i>	Tuckeroo	6m High
<i>Citrus limon</i>	Lemon Tree	3-5m High
<i>Howea forsteriana</i>	Kentia Palm	3-5m trunks
<i>Hymenosporum flavum</i>	Native Frangipani	3-5m High
<i>Plumeria acutifolia</i>	White Frangipani	Min. 75L
<i>Philodendron selloum</i>	Horsehead philodendron	3m High
<i>Tristanopsis laurina</i>	Water Gum	5-6m High

Botanical Name	Common Name	Pot Size / Installation size
<i>Alcantarea imperialis 'Rubra'</i>	Giant Bromeliad	250-300mm
<i>Alpinia zerumbet 'Variegata'</i>	Variegated Shell Ginger	300mm
<i>Cordyline rubra</i>	Red-fruited Palm Lily	300mm
<i>Fatsia japonica</i>	Japanese Araia	300mm
<i>Hibbertia scandens</i>	Climbing Guinea Flower	150-200mm
<i>Strelitzia reginae</i>	Bird of Paradise	100L
<i>Trachelospermum jasminoides</i>	Star Jasmine	150mm

PROJECT, ADDRESS		LANDSCAPE DA REPORT	
Iss.	Amendment	Date	Checked
A	Planning Proposal	06.07.18	MC

Figure 4.2 CBD - Paving Strategy

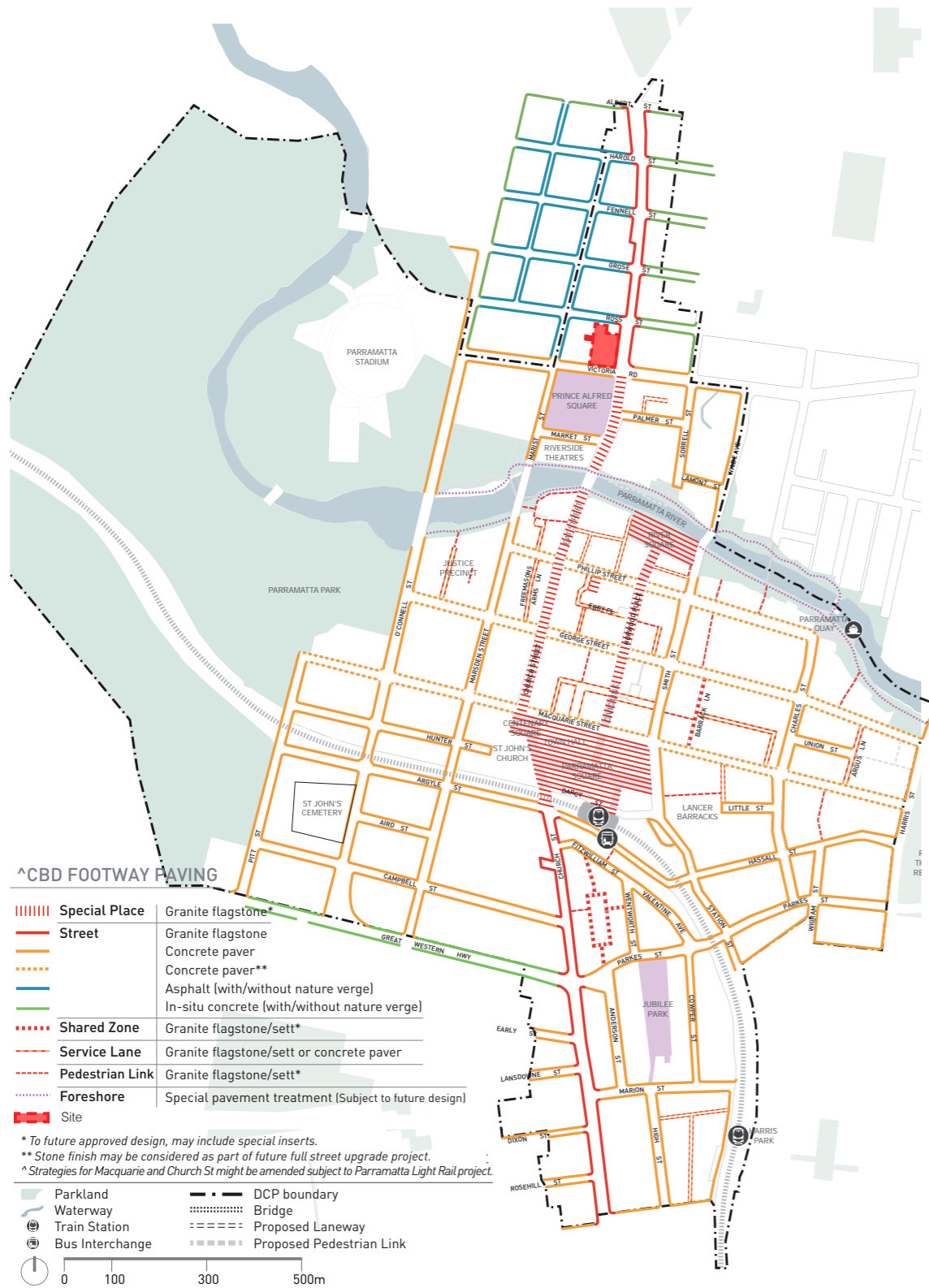


Figure 4.4 CBD - Street Tree Strategy



Excerpts from Parramatta City Council
Public Domain Guidelines July 2017



Corymbia maculata street trees

PROJECT, ADDRESS		LANDSCAPE DA REPORT	
Iss.	Amendment	Date	Checked
A	Planning Proposal	06.07.18	MC

